

# Trumpet in Bb Scales and Arpeggios

ABRSM Grade 8

*C Major*



*F Major*



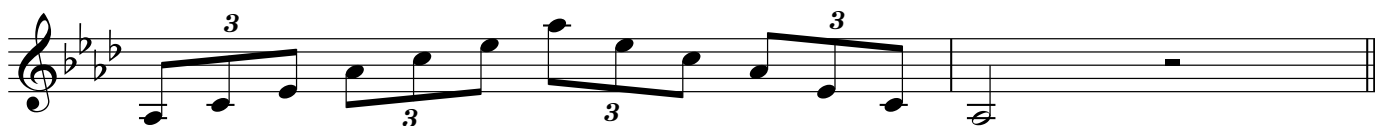
*Bb Major*



*Eb Major*



*Ab Major*



*Db Major*

Two staves of musical notation for Db Major. The first staff contains a melodic line with eighth and sixteenth notes. The second staff contains a bass line with triplets of eighth notes.

*Gb Major*

Two staves of musical notation for Gb Major. The first staff contains a melodic line with eighth and sixteenth notes. The second staff contains a bass line with triplets of eighth notes.

*Cb Major*

Two staves of musical notation for Cb Major. The first staff contains a melodic line with eighth and sixteenth notes. The second staff contains a bass line with triplets of eighth notes.

*C# Major*

Two staves of musical notation for C# Major. The first staff contains a melodic line with eighth and sixteenth notes. The second staff contains a bass line with triplets of eighth notes.

*F# Major*

Two staves of musical notation for F# Major. The first staff contains a melodic line with eighth and sixteenth notes. The second staff contains a bass line with triplets of eighth notes.

*B Major*



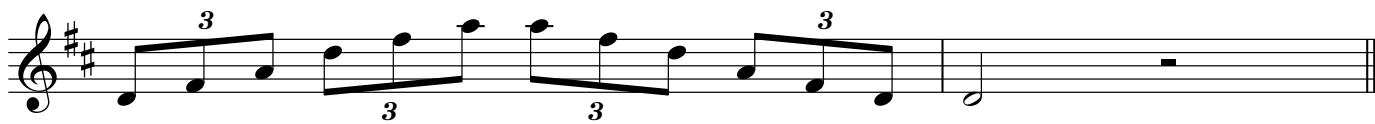
*E Major*



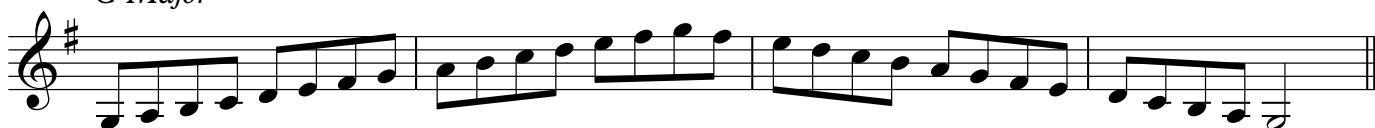
*A Major*



*D Major*



*G Major*



*A Minor Harmonic*



Musical notation for the A Minor Harmonic scale, consisting of a single staff with a treble clef and a key signature of one sharp (F#). The scale is written in eighth notes, ascending and then descending.

*A Minor Melodic*



Musical notation for the A Minor Melodic scale, consisting of a single staff with a treble clef and a key signature of one sharp (F#). The scale is written in eighth notes, ascending and then descending.



Musical notation for the A Minor triads, consisting of a single staff with a treble clef and a key signature of one sharp (F#). The scale is written in eighth notes, ascending and then descending, with triplets indicated by the number '3' above and below the notes.

*D Minor Harmonic*



Musical notation for the D Minor Harmonic scale, consisting of a single staff with a treble clef and a key signature of two flats (Bb, Fb). The scale is written in eighth notes, ascending and then descending.

*D Minor Melodic*



Musical notation for the D Minor Melodic scale, consisting of a single staff with a treble clef and a key signature of two flats (Bb, Fb). The scale is written in eighth notes, ascending and then descending.



Musical notation for the D Minor triads, consisting of a single staff with a treble clef and a key signature of two flats (Bb, Fb). The scale is written in eighth notes, ascending and then descending, with triplets indicated by the number '3' above and below the notes.

*G Minor Harmonic*



Musical notation for the G Minor Harmonic scale, consisting of a single staff with a treble clef and a key signature of two flats (Bb, Fb). The scale is written in eighth notes, ascending and then descending.

*G Minor Melodic*



Musical notation for the G Minor Melodic scale, consisting of a single staff with a treble clef and a key signature of two flats (Bb, Fb). The scale is written in eighth notes, ascending and then descending.



Musical notation for the G Minor triads, consisting of a single staff with a treble clef and a key signature of two flats (Bb, Fb). The scale is written in eighth notes, ascending and then descending, with triplets indicated by the number '3' above and below the notes.

*C Minor Harmonic*

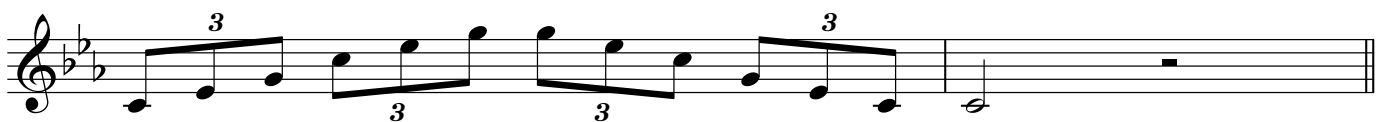


Musical notation for the C Minor Harmonic scale, consisting of a single staff with a treble clef and a key signature of three flats (Bb, Eb, Fb). The scale is written in eighth notes, ascending and then descending.

*C Minor Melodic*



Musical notation for the C Minor Melodic scale, consisting of a single staff with a treble clef and a key signature of three flats (Bb, Eb, Fb). The scale is written in eighth notes, ascending and then descending.



Musical notation for the C Minor triads, consisting of a single staff with a treble clef and a key signature of three flats (Bb, Eb, Fb). The scale is written in eighth notes, ascending and then descending, with triplets indicated by the number '3' above and below the notes.

*F Minor Harmonic**F Minor Melodic**Bb Minor Harmonic**Bb Minor Melodic**Eb Minor Harmonic**Eb Minor Melodic**Ab Minor Harmonic**Ab Minor Melodic*

*A# Minor Harmonic*

*A# Minor Melodic*

*D# Minor Harmonic*

*D# Minor Melodic*

*G# Minor Harmonic*

*G# Minor Melodic*

*C# Minor Harmonic*

*C# Minor Melodic*

*F# Minor Harmonic*

Musical notation for F# Minor Harmonic scale, treble clef, 4/4 time signature, 8 measures.

*F# Minor Melodic*

Musical notation for F# Minor Melodic scale, treble clef, 4/4 time signature, 8 measures.

Musical notation for F# Minor Harmonic scale, treble clef, 4/4 time signature, 8 measures, featuring triplets.

*B Minor Harmonic*

Musical notation for B Minor Harmonic scale, treble clef, 4/4 time signature, 8 measures.

*B Minor Melodic*

Musical notation for B Minor Melodic scale, treble clef, 4/4 time signature, 8 measures.

Musical notation for B Minor Harmonic scale, treble clef, 4/4 time signature, 8 measures, featuring triplets.

*E Minor Harmonic*

Musical notation for E Minor Harmonic scale, treble clef, 4/4 time signature, 8 measures.

*E Minor Melodic*

Musical notation for E Minor Melodic scale, treble clef, 4/4 time signature, 8 measures.

Musical notation for E Minor Harmonic scale, treble clef, 4/4 time signature, 8 measures, featuring triplets.

*Chromatic on F#*

Musical notation for Chromatic on F# scale, treble clef, 4/4 time signature, 8 measures.

Musical notation for Chromatic on F# scale, bass clef, 4/4 time signature, 8 measures.

*Chromatic on G*

Two staves of musical notation for 'Chromatic on G'. The first staff shows a chromatic scale starting on G4, moving up to G5. The second staff shows a chromatic scale starting on G3, moving down to G2. The notes are: G4, A4, B4, C5, D5, E5, F5, G5 (up); G3, F3, E3, D3, C3, B2, A2, G2 (down).

*Chromatic on G#*

Two staves of musical notation for 'Chromatic on G#'. The first staff shows a chromatic scale starting on G#4, moving up to G#5. The second staff shows a chromatic scale starting on G#3, moving down to G#2. The notes are: G#4, A#4, B#4, C#5, D#5, E#5, F#5, G#5 (up); G#3, F#3, E#3, D#3, C#3, B#2, A#2, G#2 (down).

*Chromatic on A*

Two staves of musical notation for 'Chromatic on A'. The first staff shows a chromatic scale starting on A4, moving up to A5. The second staff shows a chromatic scale starting on A3, moving down to A2. The notes are: A4, B4, C5, D5, E5, F5, G5, A5 (up); A3, G3, F3, E3, D3, C3, B2, A2 (down).

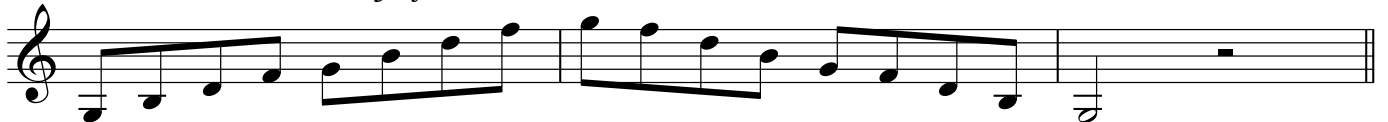
*Chromatic on A#*

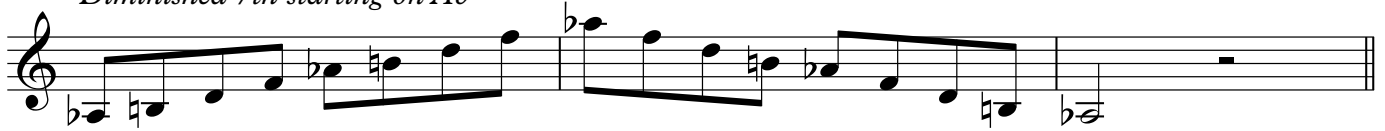
Two staves of musical notation for 'Chromatic on A#'. The first staff shows a chromatic scale starting on A#4, moving up to A#5. The second staff shows a chromatic scale starting on A#3, moving down to A#2. The notes are: A#4, B#4, C#5, D#5, E#5, F#5, G#5, A#5 (up); A#3, G#3, F#3, E#3, D#3, C#3, B#2, A#2 (down).

*Chromatic on B*

Two staves of musical notation for 'Chromatic on B'. The first staff shows a chromatic scale starting on B4, moving up to B5. The second staff shows a chromatic scale starting on B3, moving down to B2. The notes are: B4, C5, D5, E5, F5, G5, A5, B5 (up); B3, A3, G3, F3, E3, D3, C3, B2 (down).



*Chromatic on C**Whole Tone Scale on B**Whole Tone Scale on C**Dominant 7th in the key of B**Dominant 7th in the key of C**Dominant 7th in the key of Db**Dominant 7th in the key of D**Dominant 7th in the key of Eb*

*Diminished 7th starting on Ab**Diminished 7th starting on A**Diminished 7th starting on Bb*

These scales are for Trumpet, Bb Cornet, Cornet and Fluglehorn. For this grade, you need to learn Harmonic AND Melodic for your minor scales. All scales and arpeggios should be played legato tongued, staccato and legato. The scales should be played from memory. The scales from the previous grades should also be memorised, although they may or may not be used in the ABRSM practical exam. Scales should be played at  $\text{♩} = 132$  and all arpeggios (including dominant and diminished 7ths) should be played at  $\text{♩} = 76$ .