

Grade 2 Scales & Arpeggio

for ABRSM Theory

A Major



Bb Major



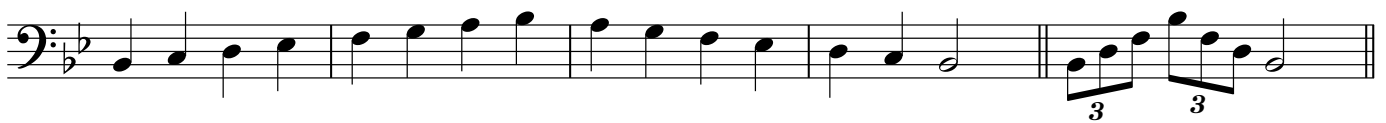
Eb Major



A Major



Bb Major



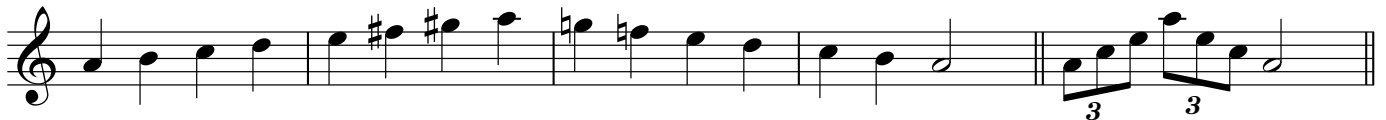
Eb Major



A Minor Harmonic



A Minor Melodic



D Minor Harmonic



D Minor Melodic



E Minor Harmonic

Musical notation for the E Minor Harmonic scale in treble clef, key signature of one sharp (F#). The scale consists of the notes E, F#, G, A, B, C, D, E. The descending part of the scale includes a tritone (B, F#) and a diminished seventh (F#, C) before resolving to the tonic (E). The final three notes (E, D, C) are marked with a '3' and a slur, indicating a triplet.

E Minor Melodic

Musical notation for the E Minor Melodic scale in treble clef, key signature of one sharp (F#). The scale consists of the notes E, F#, G, A, B, C, D, E. The descending part of the scale includes a tritone (B, F) and a diminished seventh (F, C) before resolving to the tonic (E). The final three notes (E, D, C) are marked with a '3' and a slur, indicating a triplet.

Tonic Triads

for ABRSM Grade 2 Theory

Musical notation for the tonic triads of the E major scale. The key signature has two sharps (F#, C#). The triads are: I (E-G#-B), ii (F#-A-C#), iii (G-A-B), IV (A-B-C#), V (B-C#-E), vi (C#-E-G), vii (D-F-A), VIII (E-G#-B), vii (D-F-A), vi (C#-E-G), V (B-C#-E), IV (A-B-C#), iii (G-A-B), ii (F#-A-C#), I (E-G#-B). The final triad is marked with a double bar line and a repeat sign.

Musical notation for the tonic triads of the D minor scale. The key signature has two flats (Bb, F). The triads are: I (D-F-A), ii (E-G-Bb), iii (F-Ab-C), IV (G-Ab-Bb), V (A-Bb-D), vi (Bb-D-F), vii (C-E-G), VIII (D-F-A), vii (C-E-G), vi (Bb-D-F), V (A-Bb-D), IV (G-Ab-Bb), iii (F-Ab-C), ii (E-G-Bb), I (D-F-A). The final triad is marked with a double bar line and a repeat sign.

Musical notation for the tonic triads of the C minor scale. The key signature has three flats (Bb, Eb, Ab). The triads are: I (C-Eb-G), ii (D-F-Ab), iii (Eb-F-Ab), IV (F-Ab-C), V (G-Ab-C), vi (Ab-C-Eb), vii (Bb-D-F), VIII (C-Eb-G), vii (Bb-D-F), vi (Ab-C-Eb), V (G-Ab-C), IV (F-Ab-C), iii (Eb-F-Ab), ii (D-F-Ab), I (C-Eb-G). The final triad is marked with a double bar line and a repeat sign.

Musical notation for the tonic triads of the E minor scale. The key signature has one sharp (F#). The triads are: i (E-G-A), ii (F#-A-C#), iii (G-A-B), iv (A-B-C#), V (B-C#-E), VI (C#-E-G), vii (D-F-A), viii/i (E-G#-B), vii (D-F-A), VI (C#-E-G), V (B-C#-E), iv (A-B-C#), iii (G-A-B), ii (F#-A-C#), I (E-G#-B). The final triad is marked with a double bar line and a repeat sign.

Musical notation for the tonic triads of the D minor scale. The key signature has two flats (Bb, F). The triads are: i (D-F-A), ii (E-G-Bb), iii (F-Ab-C), iv (G-Ab-Bb), V (A-Bb-D), VI (Bb-D-F), vii (C-E-G), viii/i (D-F-A), vii (C-E-G), VI (Bb-D-F), V (A-Bb-D), iv (G-Ab-Bb), iii (F-Ab-C), ii (E-G-Bb), i (D-F-A). The final triad is marked with a double bar line and a repeat sign.

Musical notation for the tonic triads of the C minor scale. The key signature has three flats (Bb, Eb, Ab). The triads are: i (C-Eb-G), ii (D-F-Ab), iii (Eb-F-Ab), iv (F-Ab-C), V (G-Ab-C), VI (Ab-C-Eb), vii (Bb-D-F), viii/i (C-Eb-G), vii (Bb-D-F), VI (Ab-C-Eb), V (G-Ab-C), iv (F-Ab-C), iii (Eb-F-Ab), ii (D-F-Ab), i (C-Eb-G). The final triad is marked with a double bar line and a repeat sign.